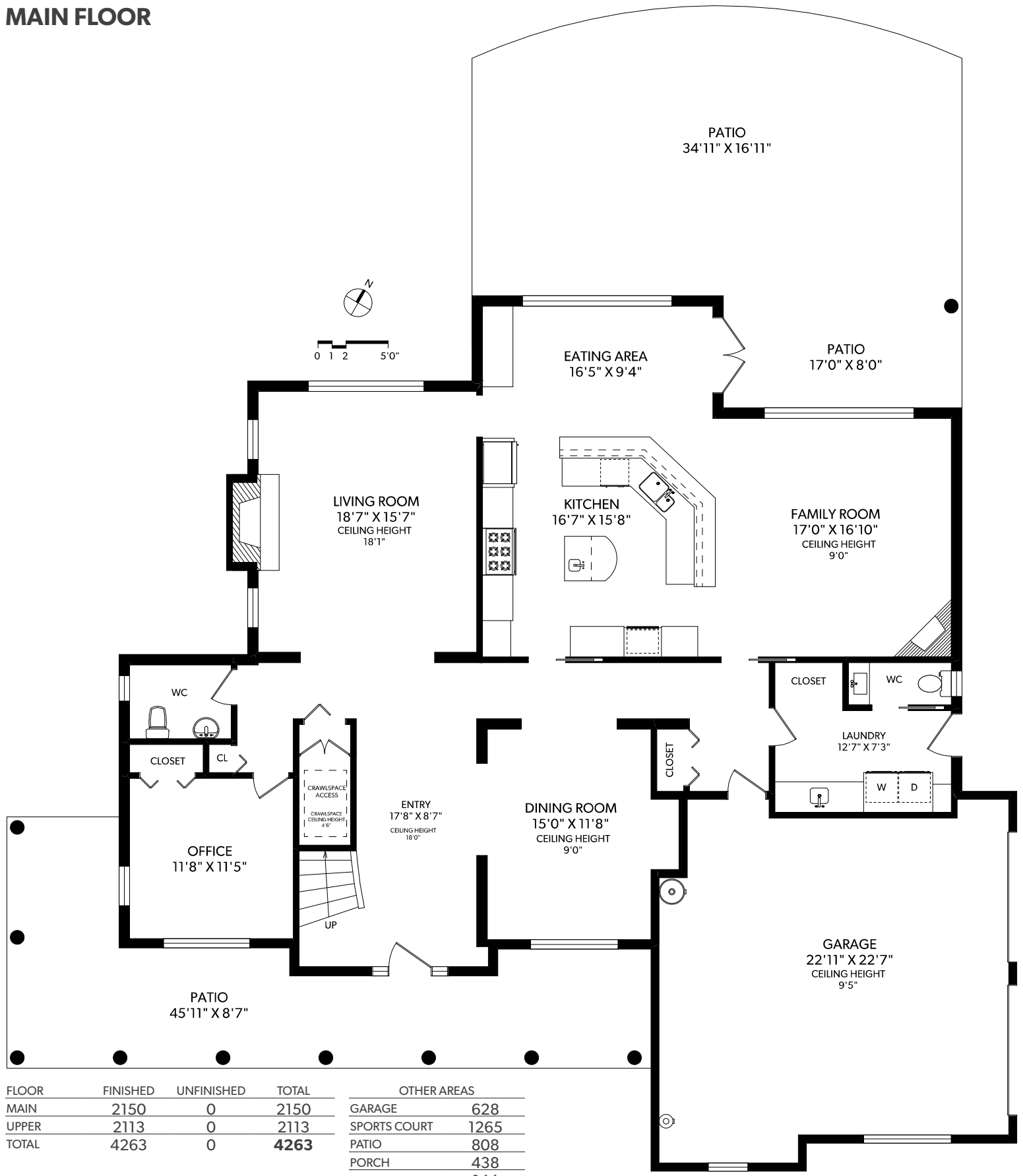


MAIN FLOOR



FLOOR	FINISHED	UNFINISHED	TOTAL	OTHER AREAS
MAIN	2150	0	2150	GARAGE 628
UPPER	2113	0	2113	SPORTS COURT 1265
TOTAL	4263	0	4263	PATIO 808
				PORCH 438
				BALCONY 144

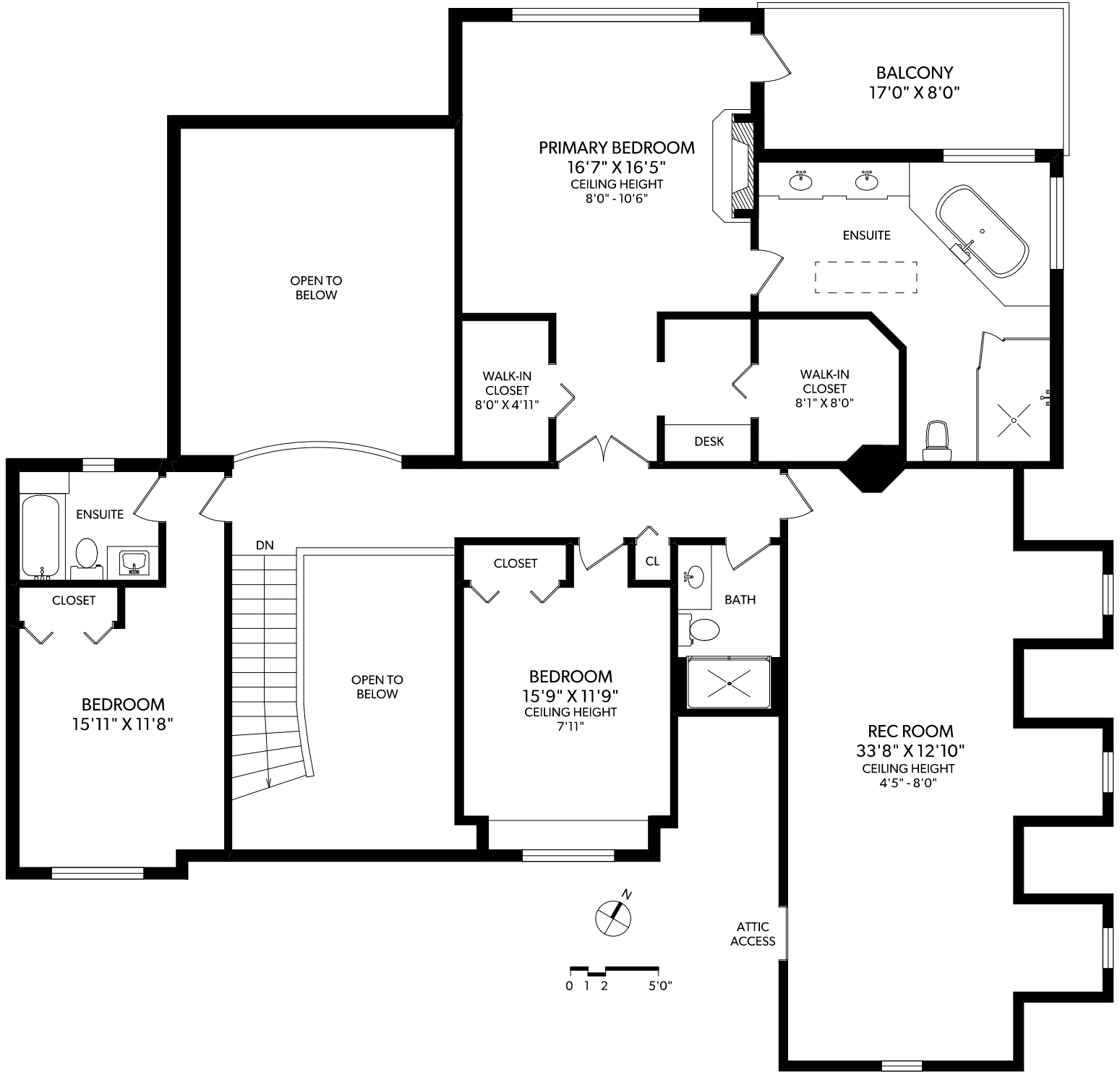
REAL FOTO
 250-388-6998
 ORDERS@REALFOTO.CA

6480 TORIN ROAD
 DOCUMENT PREPARED FOR THE EXCLUSIVE USE OF
ANDY STEPHENSON
 MEASURED 03/21/2023 BY IAN BERTRAM

Sotheby's | **Canada**
 INTERNATIONAL REALTY

All information furnished regarding this property is from sources deemed reliable but no warranty or representation is made to the accuracy thereof. Purchaser to verify measurements if important.

UPPER FLOOR



FLOOR	FINISHED	UNFINISHED	TOTAL
MAIN	2150	0	2150
UPPER	2113	0	2113
TOTAL	4263	0	4263

OTHER AREAS	
GARAGE	628
SPORTS COURT	1265
PATIO	808
PORCH	438
BALCONY	144



6480 TORIN ROAD

DOCUMENT PREPARED FOR THE EXCLUSIVE USE OF

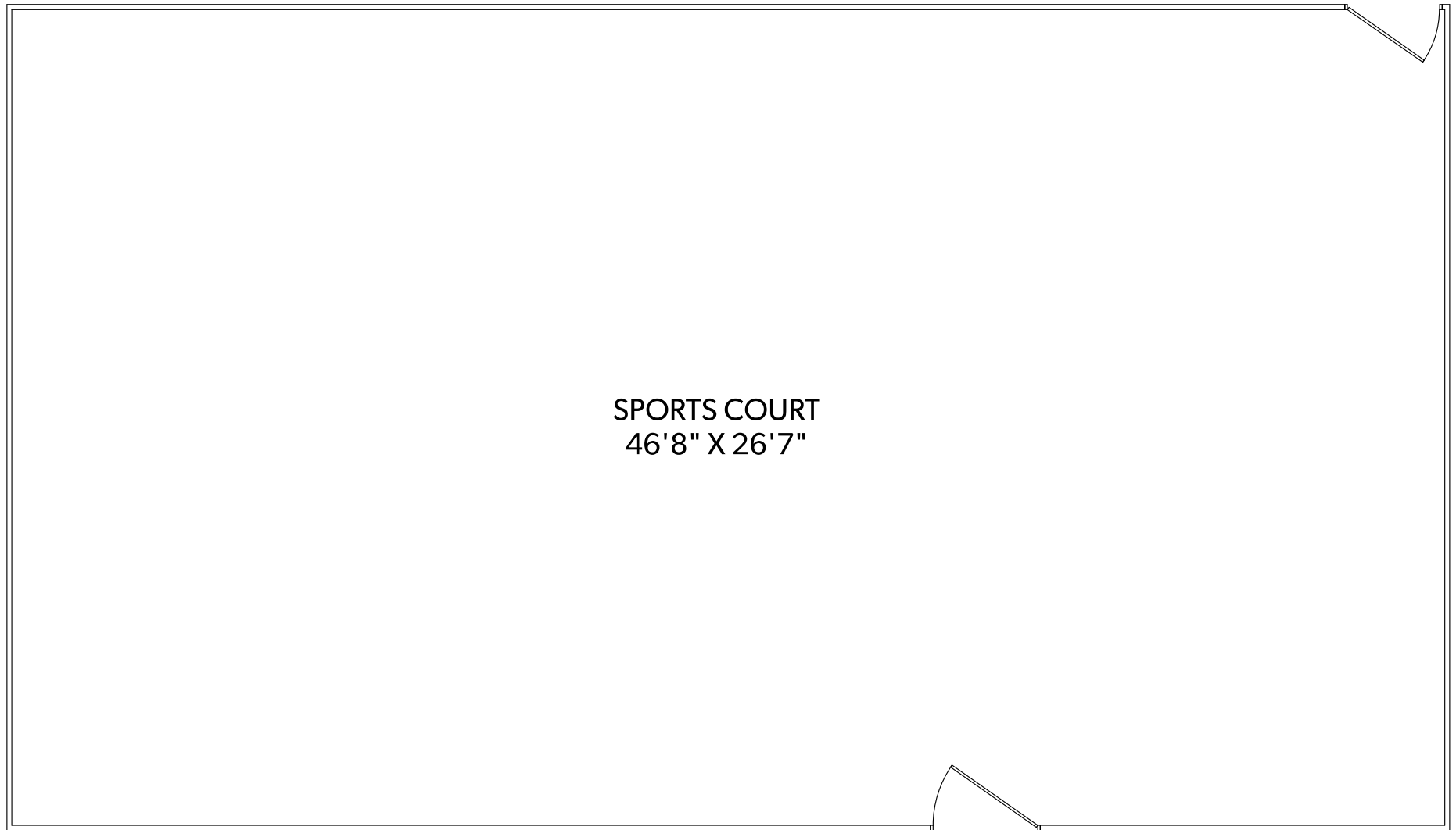
ANDY STEPHENSON

250-388-6998
ORDERS@REALFOTO.CA

MEASURED 03/21/2023 BY IAN BERTRAM

Sotheby's | Canada
INTERNATIONAL REALTY

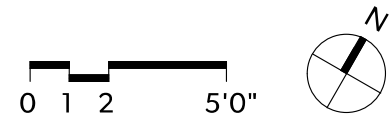
SPORTS COURT



SPORTS COURT
46'8" X 26'7"

FLOOR	FINISHED	UNFINISHED	TOTAL
MAIN	2150	0	2150
UPPER	2113	0	2113
TOTAL	4263	0	4263

OTHER AREAS	
GARAGE	628
SPORTS COURT	1265
PATIO	808
PORCH	438
BALCONY	144



6480 TORIN ROAD

DOCUMENT PREPARED FOR THE EXCLUSIVE USE OF

ANDY STEPHENSON

250-388-6998
ORDERS@REALFOTO.CA MEASURED 03/21/2023 BY IAN BERTRAM

All information furnished regarding this property is from sources deemed reliable but no warranty or representation is made to the accuracy thereof. Purchaser to verify measurements if important.

Sotheby's | Canada
INTERNATIONAL REALTY